

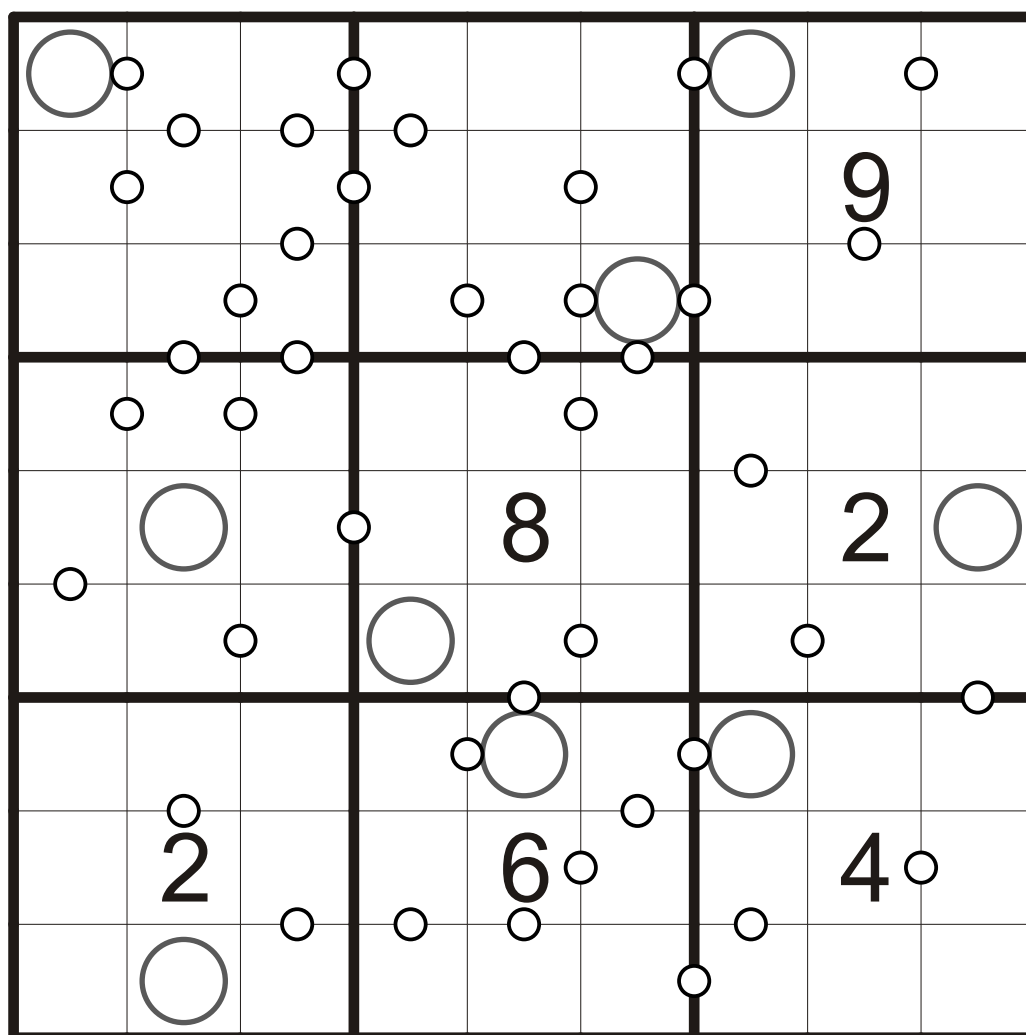
Super Consecutive

Rules: Apply standard sudoku rules and moreover in each 3x3 box one important number N is marked with a big circle.

Then all pairs of cells sharing an edge and containing digits with difference N are marked with small circle.

Where two 3x3 boxes meet, pairs from both of them are marked.

①	2	5	6
8	1	9	③
9	7	4	8
2	④	8	1



KP SC 1

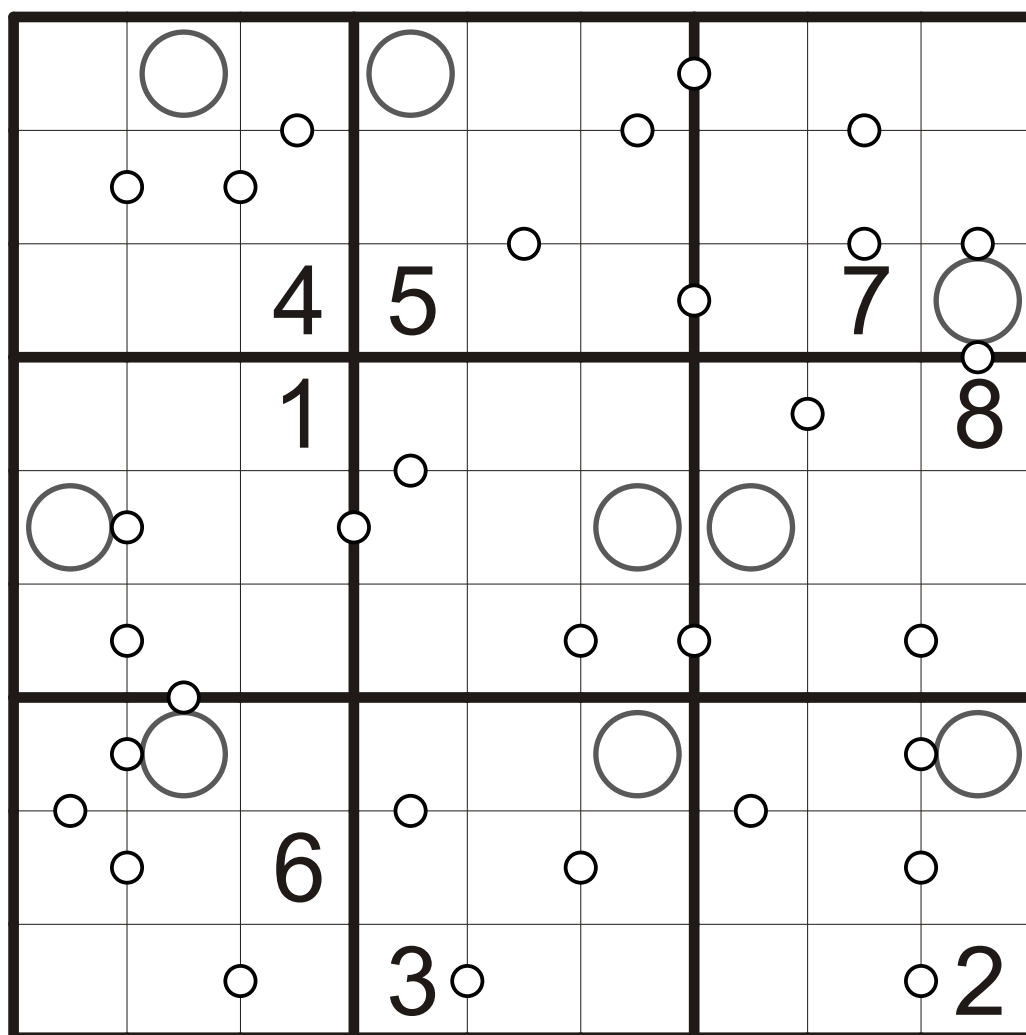
Super Consecutive

Rules: Apply standard sudoku rules and moreover in each 3x3 box one important number N is marked with a big circle.

Then all pairs of cells sharing an edge and containing digits with difference N are marked with small circle.

Where two 3x3 boxes meet, pairs from both of them are marked.

①	2	5	6
8	1	9	③
9	7	4	8
2	④	8	1



KP SC 2

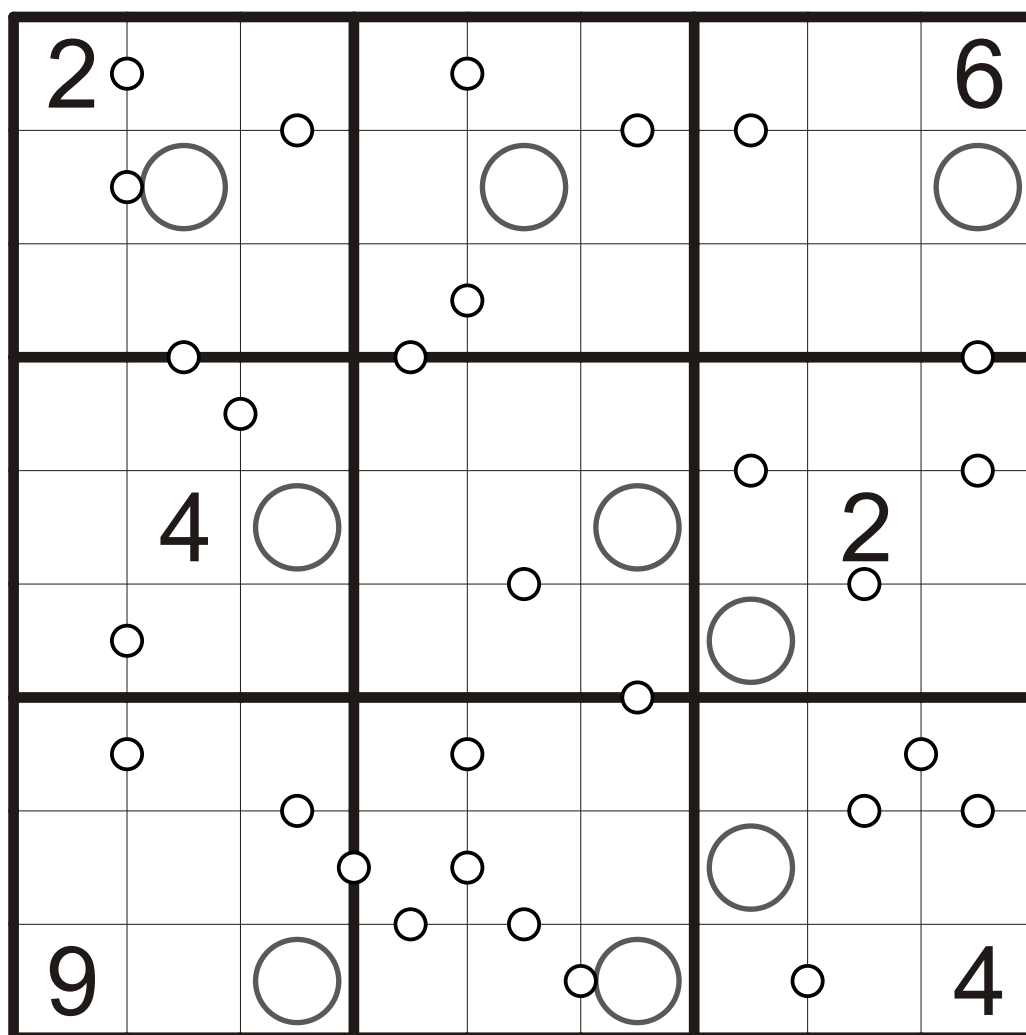
Super Consecutive

Rules: Apply standard sudoku rules and moreover in each 3x3 box one important number N is marked with a big circle.

Then all pairs of cells sharing an edge and containing digits with difference N are marked with small circle.

Where two 3x3 boxes meet, pairs from both of them are marked.

①	2	5	6
8	1	9	③
9	7	4	8
2	④	8	1



KP SC 3

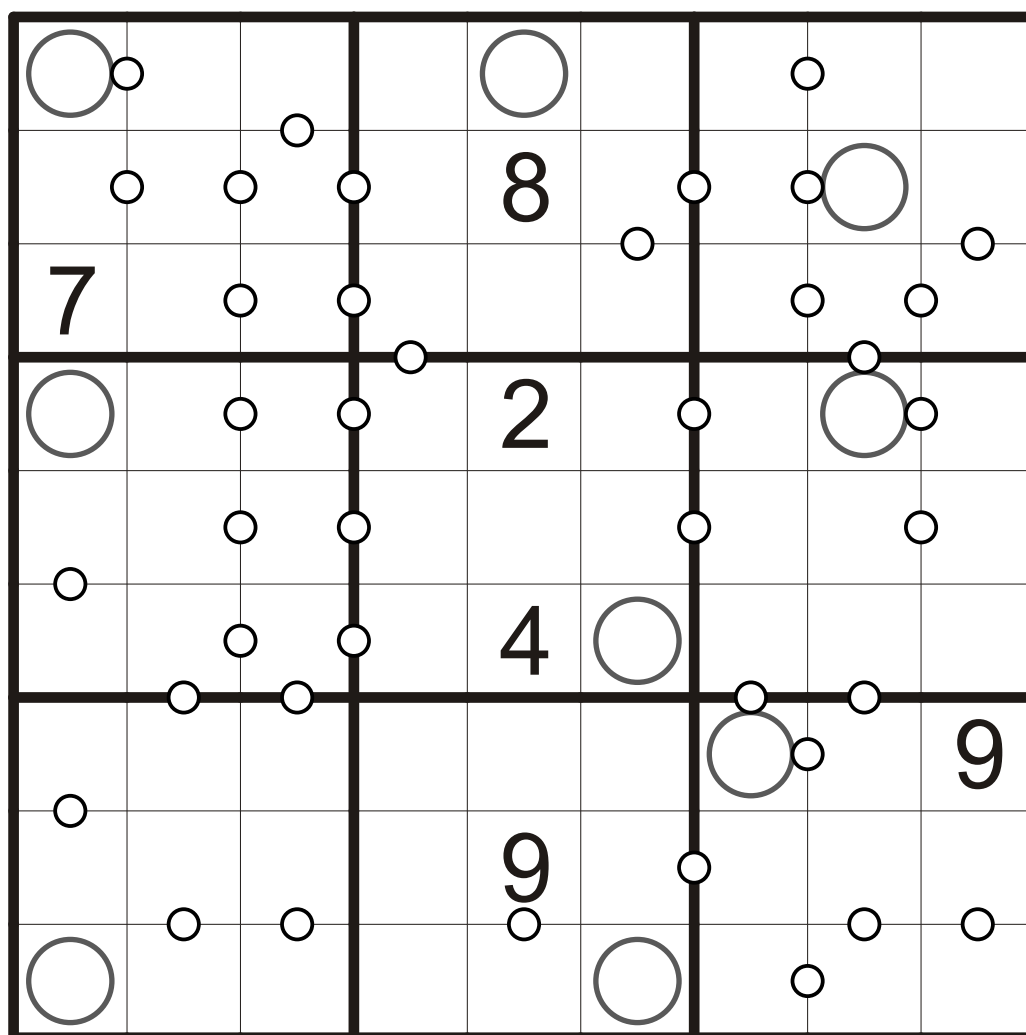
Super Consecutive

Rules: Apply standard sudoku rules and moreover in each 3x3 box one important number N is marked with a big circle.

Then all pairs of cells sharing an edge and containing digits with difference N are marked with small circle.

Where two 3x3 boxes meet, pairs from both of them are marked.

①	2	5	6
8	1	9	③
9	7	4	8
2	④	8	1



KP SC 4

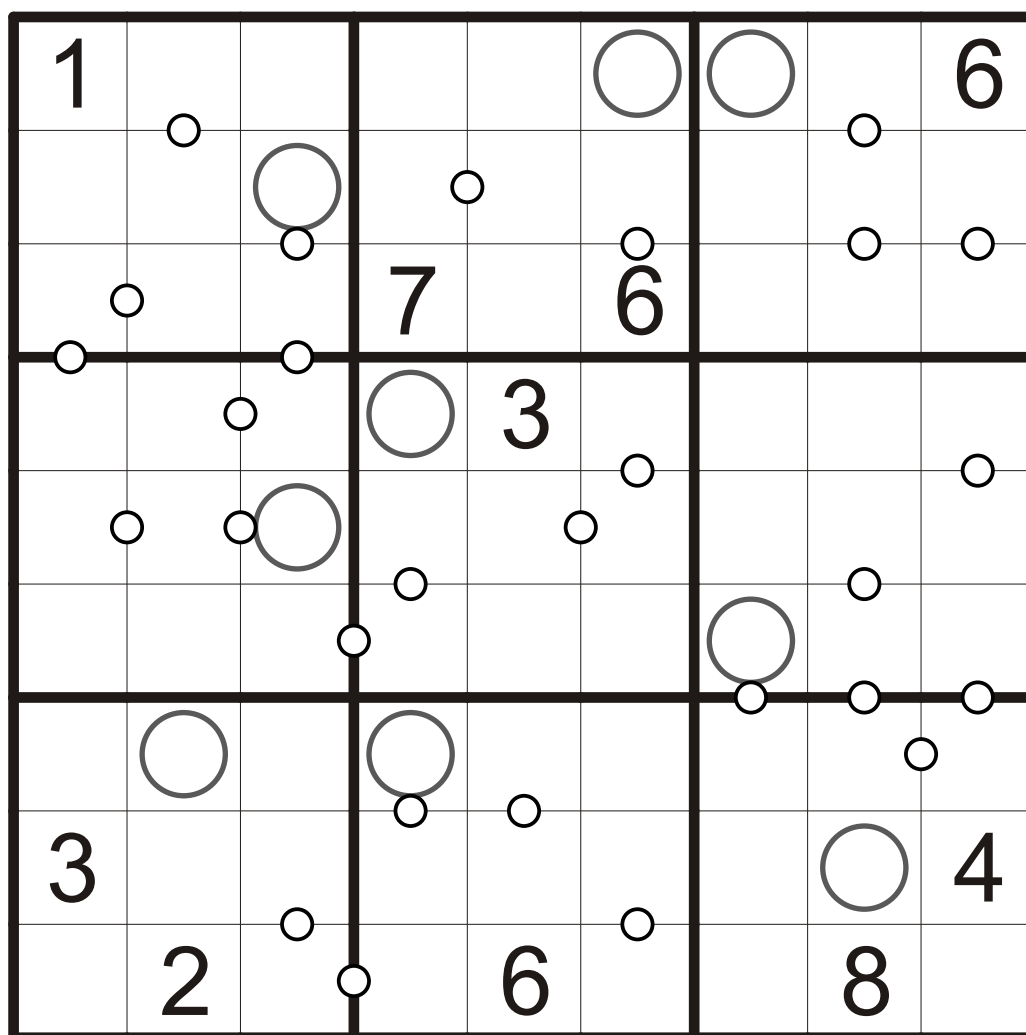
Super Consecutive

Rules: Apply standard sudoku rules and moreover in each 3x3 box one important number N is marked with a big circle.

Then all pairs of cells sharing an edge and containing digits with difference N are marked with small circle.

Where two 3x3 boxes meet, pairs from both of them are marked.

①	2	5	6
8	1	9	③
9	7	4	8
2	④	8	1



KP SC 5

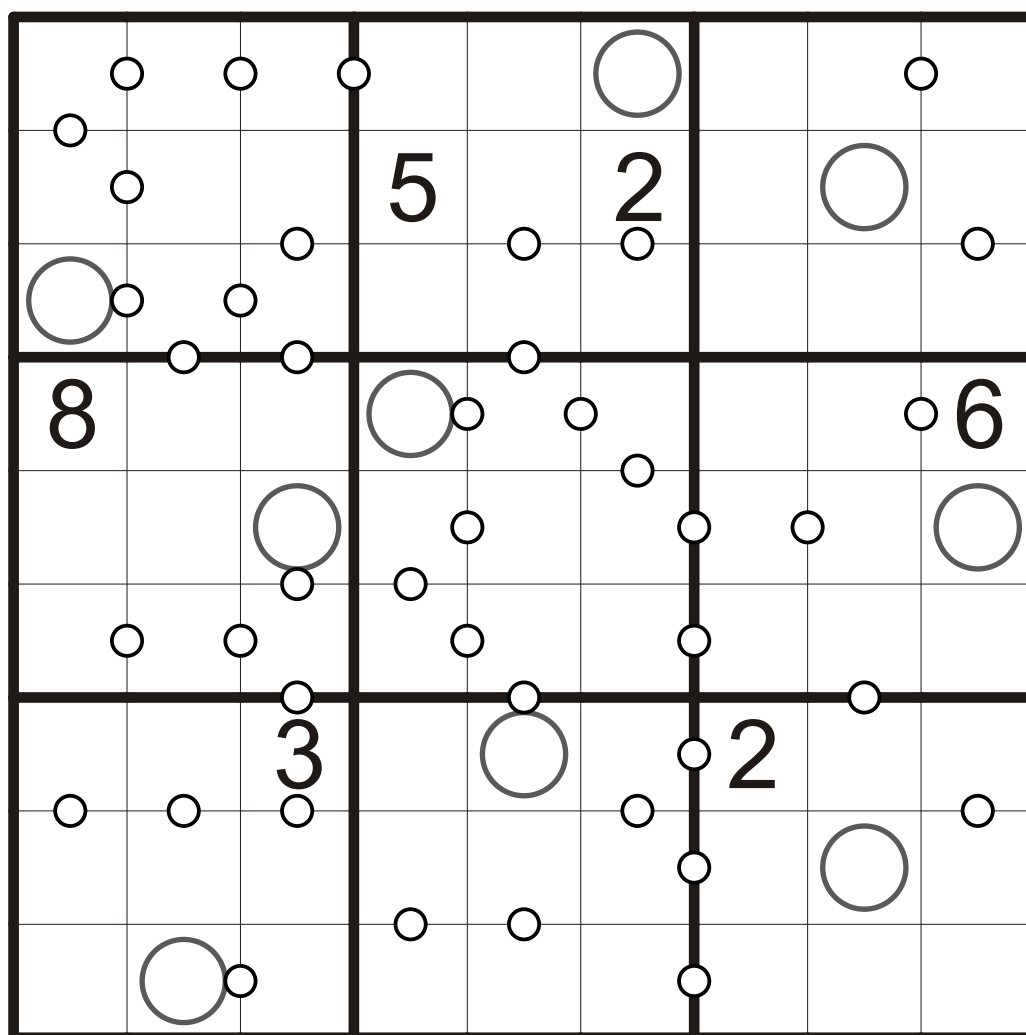
Super Consecutive

Rules: Apply standard sudoku rules and moreover in each 3x3 box one important number N is marked with a big circle.

Then all pairs of cells sharing an edge and containing digits with difference N are marked with small circle.

Where two 3x3 boxes meet, pairs from both of them are marked.

①	2	5	6
8	1	9	③
9	7	4	8
2	④	8	1



KP SC 6

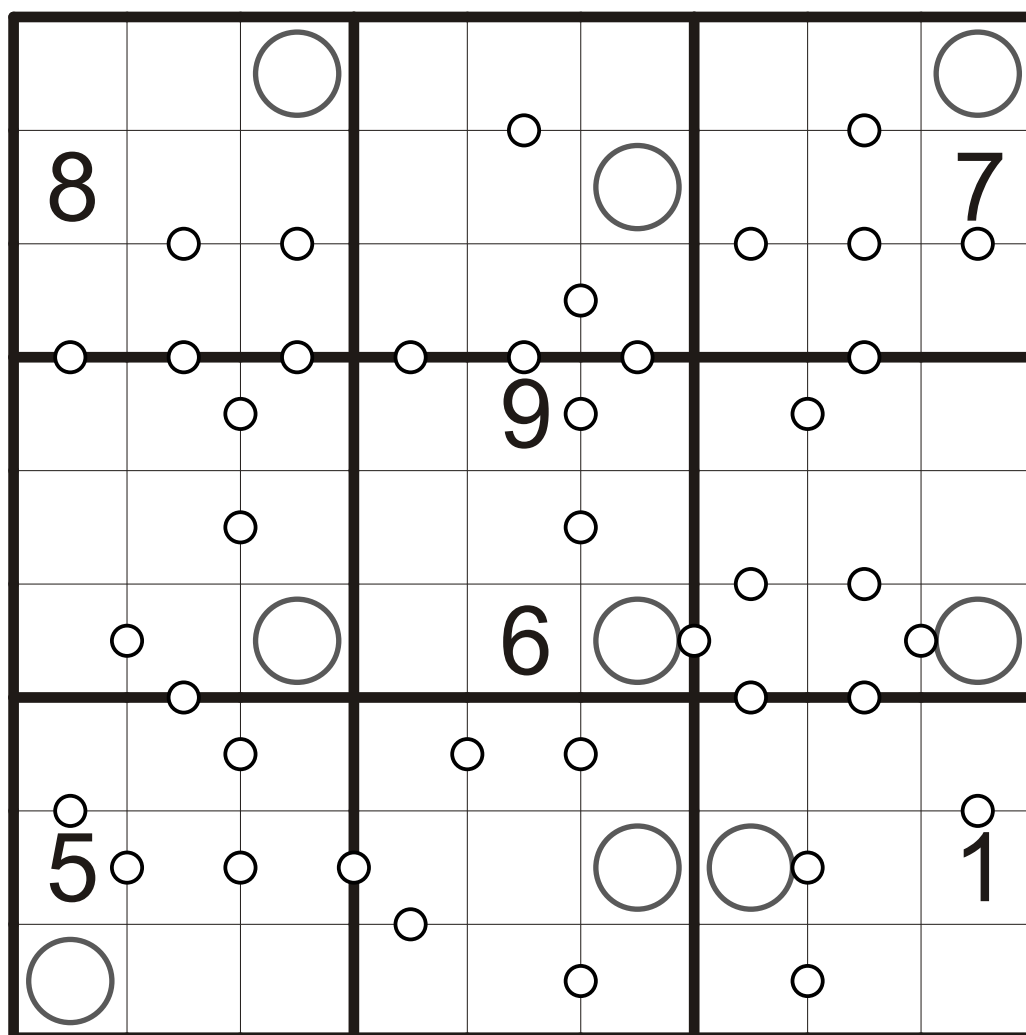
Super Consecutive

Rules: Apply standard sudoku rules and moreover in each 3x3 box one important number N is marked with a big circle.

Then all pairs of cells sharing an edge and containing digits with difference N are marked with small circle.

Where two 3x3 boxes meet, pairs from both of them are marked.

①	2	5	6
8	1	9	③
9	7	4	8
2	④	8	1



KP SC 7

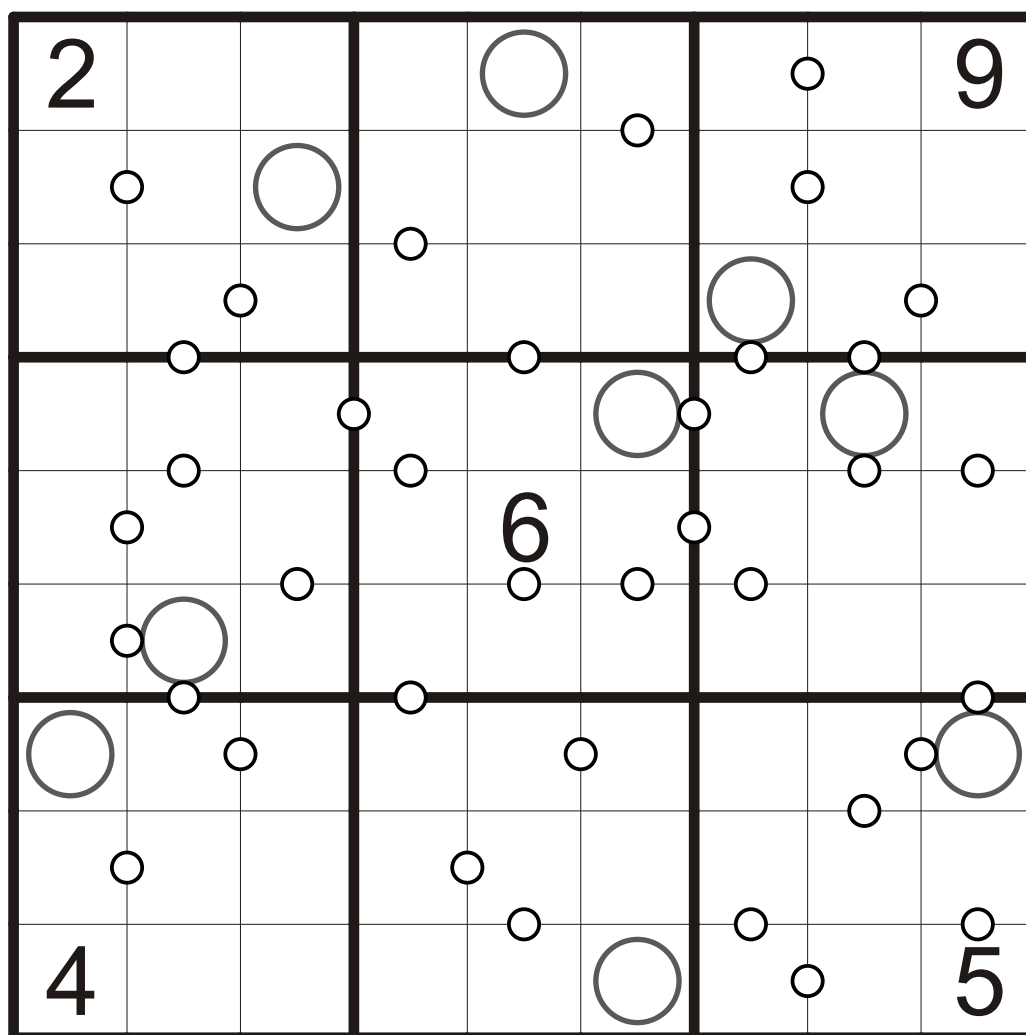
Super Consecutive

Rules: Apply standard sudoku rules and moreover in each 3x3 box one important number N is marked with a big circle.

Then all pairs of cells sharing an edge and containing digits with difference N are marked with small circle.

Where two 3x3 boxes meet, pairs from both of them are marked.

①	2	5	6
8	1	9	③
9	7	4	8
2	④	8	1



KP SC 8

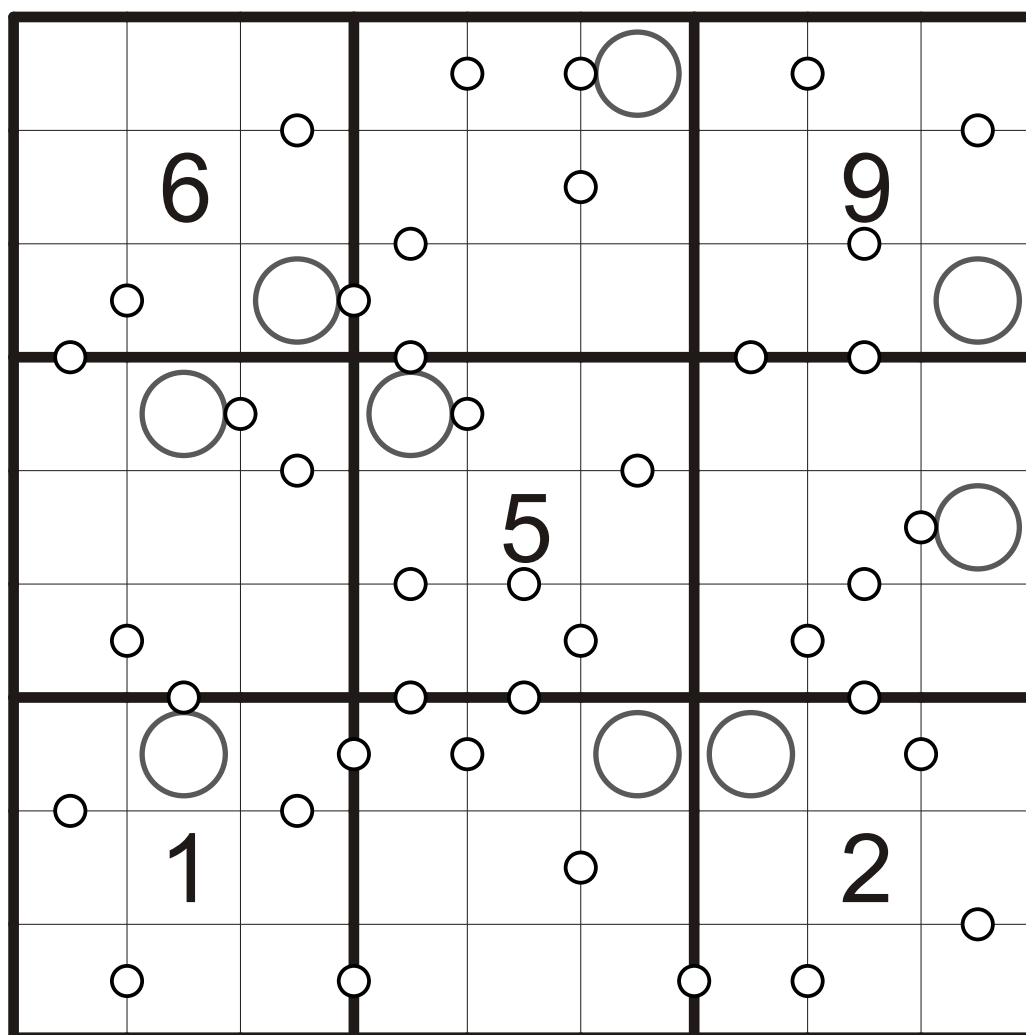
Super Consecutive

Rules: Apply standard sudoku rules and moreover in each 3x3 box one important number N is marked with a big circle.

Then all pairs of cells sharing an edge and containing digits with difference N are marked with small circle.

Where two 3x3 boxes meet, pairs from both of them are marked.

①	2	5	6
8	1	9	③
9	7	4	8
2	④	8	1



KP SC bonus 1

© Honza Krték Novotný

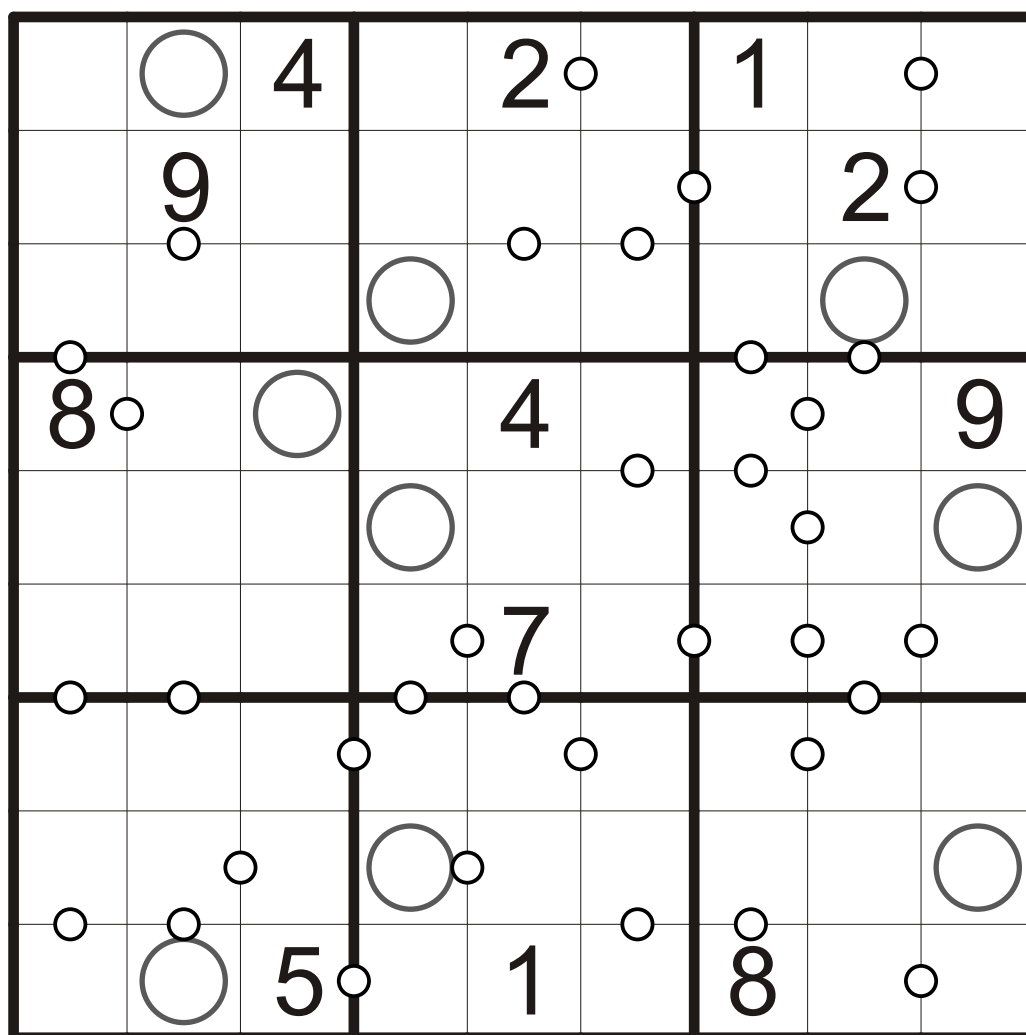
Super Consecutive

Rules: Apply standard sudoku rules and moreover in each 3x3 box one important number N is marked with a big circle.

Then all pairs of cells sharing an edge and containing digits with difference N are marked with small circle.

Where two 3x3 boxes meet, pairs from both of them are marked.

①	2	5	6
8	1	9	③
9	7	4	8
2	④	8	1



KP SC bonus 2

2	4	3	5	9	8	6	1	7
8	6	5	7	3	1	4	9	2
1	9	7	6	4	2	8	3	5
7	8	9	1	2	6	3	5	4
5	1	4	3	8	7	9	2	6
6	3	2	4	5	9	1	7	8
9	7	8	2	1	4	5	6	3
3	2	1	8	6	5	7	4	9
4	5	6	9	7	3	2	8	1

KP SC 1

8	2	7	6	4	3	9	1	5
1	3	5	8	7	9	2	4	6
6	9	4	5	1	2	8	7	3
7	6	1	2	3	5	4	9	8
4	8	2	9	6	7	5	3	1
9	5	3	4	8	1	6	2	7
2	1	9	7	5	6	3	8	4
3	4	6	1	2	8	7	5	9
5	7	8	3	9	4	1	6	2

KP SC 2

2	5	1	9	4	7	8	3	6
6	3	4	8	5	2	1	9	7
7	8	9	1	6	3	5	4	2
5	2	8	6	7	4	3	1	9
1	4	6	3	9	8	7	2	5
3	9	7	2	1	5	4	6	8
4	1	2	7	8	6	9	5	3
8	6	5	4	3	9	2	7	1
9	7	3	5	2	1	6	8	4

KP SC 3

1	2	6	4	7	5	8	9	3
3	4	5	6	8	9	2	1	7
7	9	8	1	3	2	4	5	6
5	6	1	7	2	3	9	4	8
4	8	3	9	5	1	7	6	2
9	7	2	8	4	6	5	3	1
8	5	4	3	6	7	1	2	9
6	1	7	2	9	4	3	8	5
2	3	9	5	1	8	6	7	4

KP SC 4

1	9	8	2	4	5	3	7	6
6	7	2	3	8	1	9	4	5
5	3	4	7	9	6	8	1	2
2	4	7	1	3	9	6	5	8
9	6	3	5	7	8	4	2	1
8	1	5	6	2	4	7	9	3
7	8	6	4	5	2	1	3	9
3	5	9	8	1	7	2	6	4
4	2	1	9	6	3	5	8	7

KP SC 5

5	7	9	3	4	6	1	2	8
3	1	8	5	7	2	4	6	9
2	4	6	9	1	8	5	7	3
8	5	7	1	2	3	9	4	6
6	9	1	7	8	4	3	5	2
4	3	2	6	5	9	7	8	1
7	8	3	4	6	1	2	9	5
9	6	5	2	3	7	8	1	4
1	2	4	8	9	5	6	3	7

KP SC 6

1	3	5	2	7	6	8	9	4
8	9	2	1	3	4	6	5	7
6	4	7	8	5	9	2	1	3
7	5	6	4	9	2	1	3	8
4	2	3	5	1	8	7	6	9
9	8	1	3	6	7	5	4	2
3	6	8	7	4	1	9	2	5
5	7	9	6	2	3	4	8	1
2	1	4	9	8	5	3	7	6

KP SC 7

2	5	4	6	7	8	3	1	9
3	9	6	2	4	1	7	5	8
8	1	7	9	3	5	2	6	4
9	7	8	5	1	2	6	4	3
1	4	2	3	6	9	5	8	7
6	3	5	4	8	7	1	9	2
5	8	3	7	9	6	4	2	1
7	2	1	8	5	4	9	3	6
4	6	9	1	2	3	8	7	5

KP SC 8

4	5	1	9	6	3	2	8	7
3	6	8	7	2	5	4	9	1
2	9	7	4	8	1	5	3	6
5	3	6	2	4	8	7	1	9
7	8	9	1	5	6	3	4	2
1	4	2	3	7	9	8	6	5
6	2	3	5	9	4	1	7	8
8	1	5	6	3	7	9	2	4
9	7	4	8	1	2	6	5	3

KP SC bonus 1

6	7	4	8	2	5	1	9	3
5	9	3	1	6	7	4	2	8
1	2	8	3	9	4	5	6	7
8	1	7	2	4	3	6	5	9
3	4	2	6	5	9	7	8	1
9	5	6	1	7	8	2	3	4
2	8	1	5	3	7	9	4	6
7	6	9	4	8	2	3	1	5
4	3	5	9	1	6	8	7	2

KP SC bonus 2