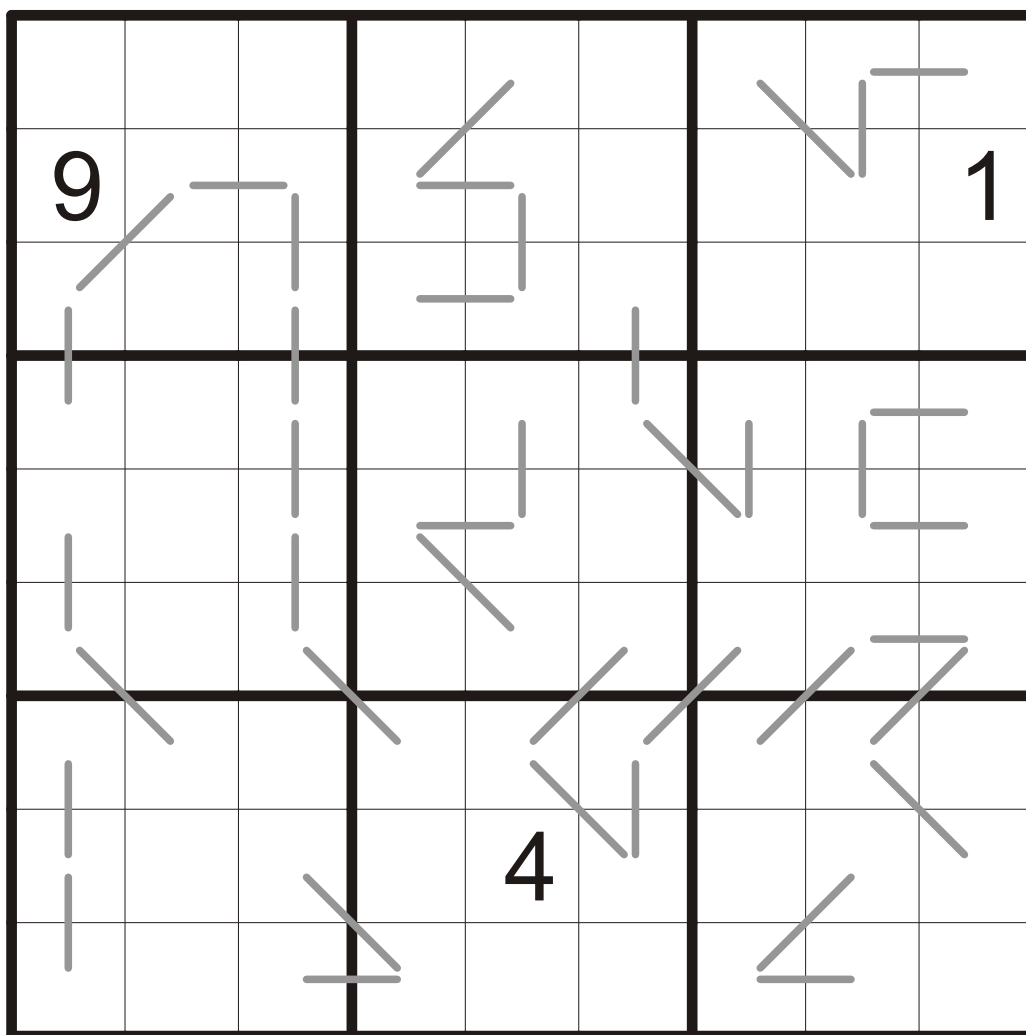


Sequences

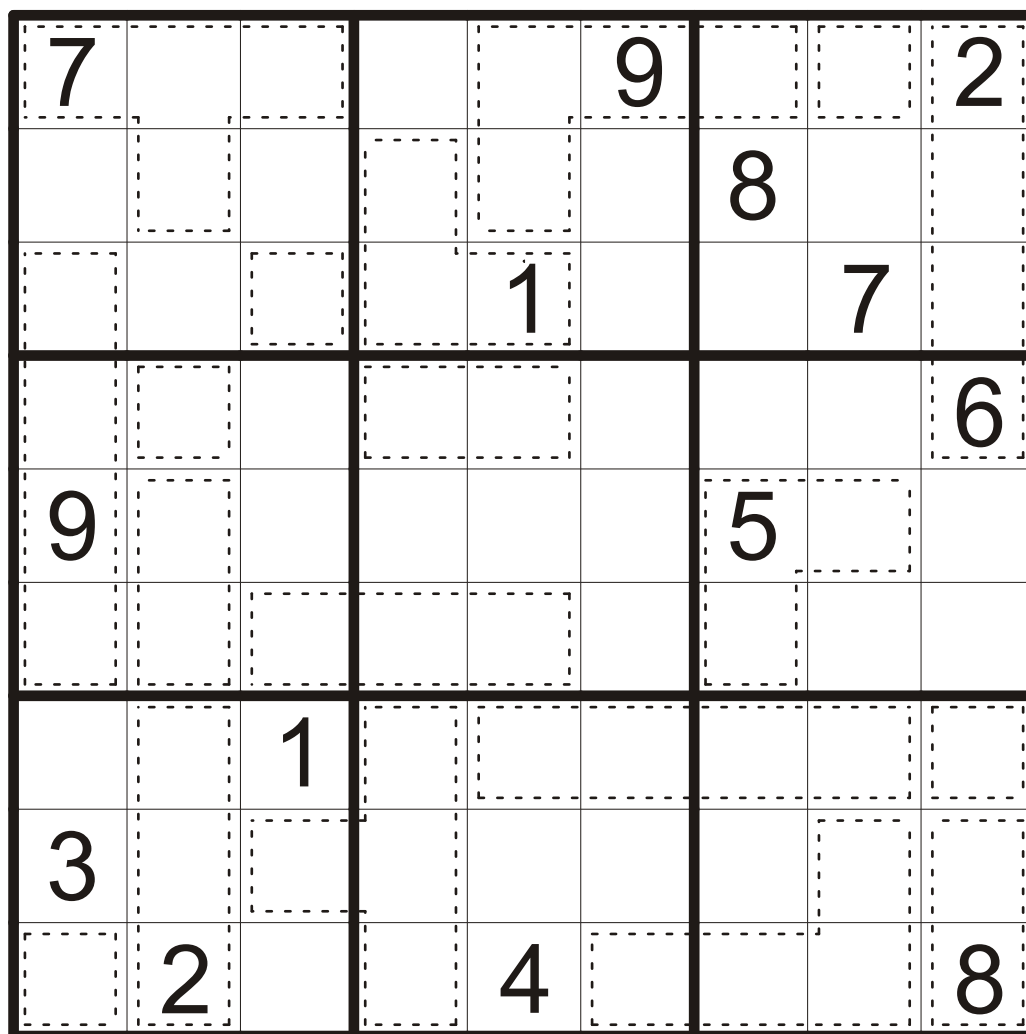
Rules: Apply standard sudoku rules and moreover the digits along the grey lines are arithmetic sequences. It means that the difference between two following digits along the line is the same and the digits are not repeated there. (e.g. 1-3-5 or 9-8-7-6.)



KP DV 1

Shapes

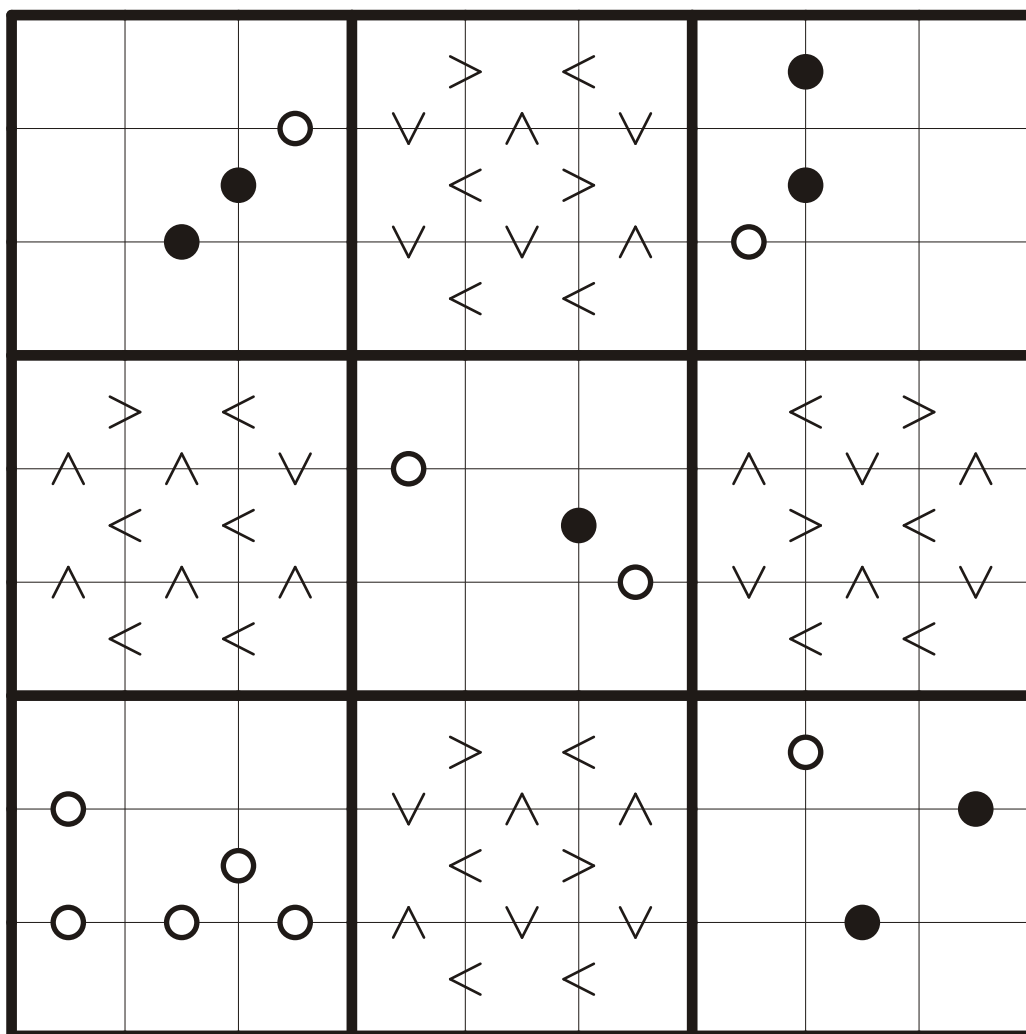
Rules: Apply standard sudoku rules and moreover all cages of each shape (rotated and/or mirrored) contain the same set of digits.



KP DV 2

Biathlon

Rules: Apply standard sudoku rules and moreover there are greater/less signs. All the pairs of consecutive digits are marked with white dots and all the pairs in which one digit is the double of the other one are marked with black dots. (The dot between digits 1 and 2 has any of these two dots.) Take care of the cells on the edge of squares where there are no signs.



KP DD 3

Neighbors

Rules: Apply standard sudoku rules. There is a cross in the cell if the value of the digit (in this cell) is the number of different digits among its diagonal neighbors. If the value of the digit is the number of different digits among all the neighbors (up to 8 in any direction), there is a circle in the cell.

All the cells with given characteristics are indicated.

4	9	1
8	8	6
1	Ⓢ	2
5	4	7

			○		×			
	○						5	
○			○	×		8		
×		×				×	○	
				7		×	○	○
			6		×	○		
		8			○		○	×
1							×	
	6	○	○	×				○

KP DV 4

Irregular dots

Rules:

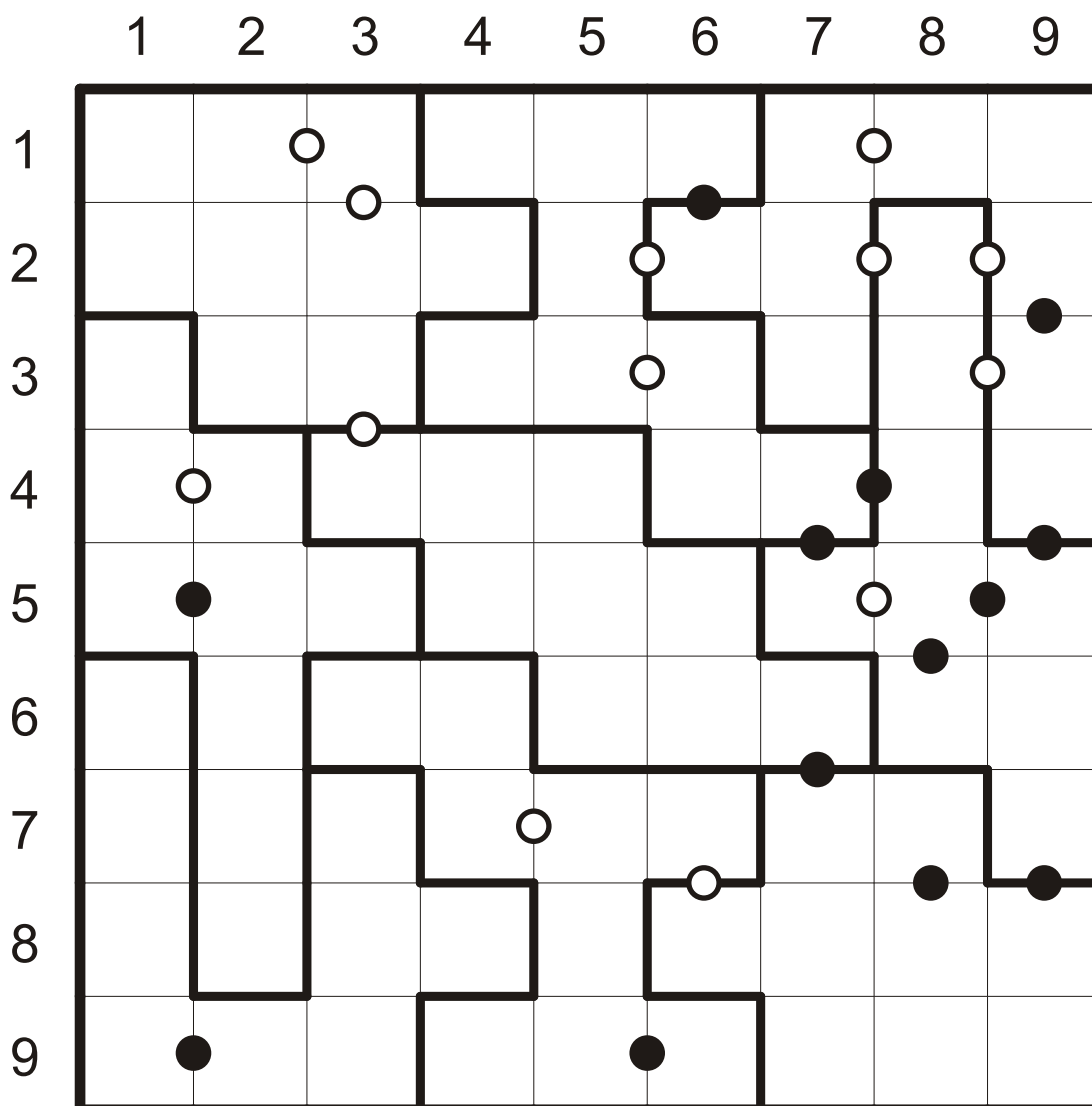
Fill in the grid so that every row, every column and every outlined (coloured) region contains the digits 1 to 9.

If the difference of two adjacent digits in the Nth line is N, there is a white dot between them. If the sum of two adjacent digits in the Nth line is N, there is a black dot.

The same rule holds for columns

All the cells with given characteristics are indicated.

1	○	2	○	3	○	4
3		4	○	2		1
○						●
2	●	1	○	4		3
		○		○		
4		3	●	1		2



KP DV 5

Multiplication

Rules: Apply standard sudoku rules.
Moreover in the cage there is calculation of the multiplication table. The two- digit number in the second line of the cage is always product of the one-digit and one-digit numbers in the first line of the cage.

4	⊗	3
1		2

9		1				⊗	⊗	
	7							⊗
4								
				⊗				
			⊗					2
		⊗						
⊗								
						⊗		5
				2			6	

KP DV 6

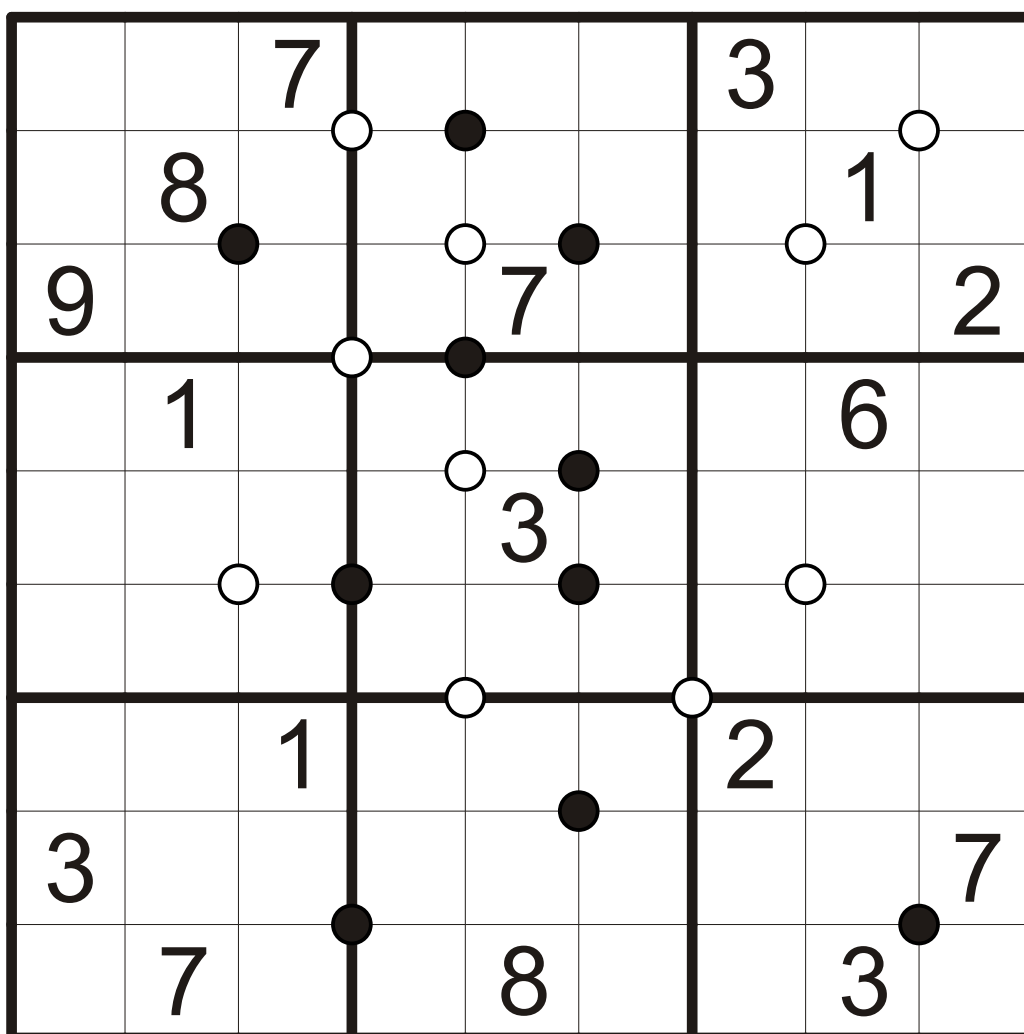
Clock-Faces

Rules: Apply standard sudoku rules.

Moreover digits around the white clock-faces are ordered by the size in the clockwise direction. Digits around the black clock-faces are ordered by the size in the anticlockwise direction.

All the clock-faces are indicated.

9	5
1	3
5	4



KP DV 7

7	6	1	2	9	4	3	5	8
9	3	4	7	5	8	6	2	1
2	8	5	1	3	6	7	9	4
1	2	6	3	8	7	9	4	5
5	9	7	4	6	1	8	3	2
3	4	8	5	2	9	1	6	7
4	1	2	9	7	3	5	8	6
6	7	3	8	4	5	2	1	9
8	5	9	6	1	2	4	7	3

KP DV 1

7	4	8	6	3	9	1	5	2
1	3	9	5	2	7	8	6	4
2	6	5	4	1	8	3	7	9
4	5	7	1	8	3	2	9	6
9	8	3	2	6	4	5	1	7
6	1	2	9	7	5	4	8	3
8	7	1	3	9	2	6	4	5
3	9	4	8	5	6	7	2	1
5	2	6	7	4	1	9	3	8

KP DV 2

1	7	3	9	5	6	4	8	2
9	4	2	7	8	1	6	3	5
5	8	6	2	3	4	7	9	1
2	1	8	5	7	9	3	6	4
3	5	7	6	4	2	9	1	8
4	6	9	8	1	3	2	5	7
6	9	1	4	2	5	8	7	3
7	3	4	1	9	8	5	2	6
8	2	5	3	6	7	1	4	9

KP DV 3

6	1	7	5	8	2	9	3	4
4	8	3	1	6	9	2	5	7
5	9	2	7	4	3	8	1	6
2	7	4	8	9	5	3	6	1
9	3	6	2	7	1	4	8	5
8	5	1	6	3	4	7	2	9
3	4	8	9	1	6	5	7	2
1	2	9	3	5	7	6	4	8
7	6	5	4	2	8	1	9	3

KP DV 4

6	4	5	3	7	2	9	8	1
8	1	2	9	6	4	7	5	3
1	7	3	4	5	8	2	9	6
4	8	6	7	2	9	1	3	5
2	3	7	8	9	5	6	1	4
5	6	9	2	1	3	4	7	8
9	5	4	1	8	7	3	6	2
3	9	8	6	4	1	5	2	7
7	2	1	5	3	6	8	4	9

KP DV 5

9	6	1	4	5	3	7	2	8
3	7	5	8	6	2	1	4	9
4	8	2	1	9	7	5	3	6
6	2	3	9	7	8	4	5	1
1	5	7	6	3	4	9	8	2
8	9	4	2	1	5	6	7	3
7	3	6	5	8	9	2	1	4
2	1	8	7	4	6	3	9	5
5	4	9	3	2	1	8	6	7

KP DV 6

1	6	7	2	9	5	3	4	8
2	8	5	3	6	4	7	1	9
9	3	4	8	7	1	6	5	2
7	1	3	9	2	8	5	6	4
8	4	6	5	3	7	9	2	1
5	2	9	1	4	6	8	7	3
4	9	1	7	5	3	2	8	6
3	5	8	6	1	2	4	9	7
6	7	2	4	8	9	1	3	5

KP DV 7

1	6	7	3	5	9	8	2	4
4	8	5	7	6	2	9	1	3
9	3	2	8	1	4	5	6	7
8	9	6	2	3	1	7	4	5
2	7	3	5	4	6	1	9	8
5	1	4	9	7	8	2	3	6
3	2	1	4	8	7	6	5	9
7	4	9	6	2	5	3	8	1
6	5	8	1	9	3	4	7	2

KP DV 8